

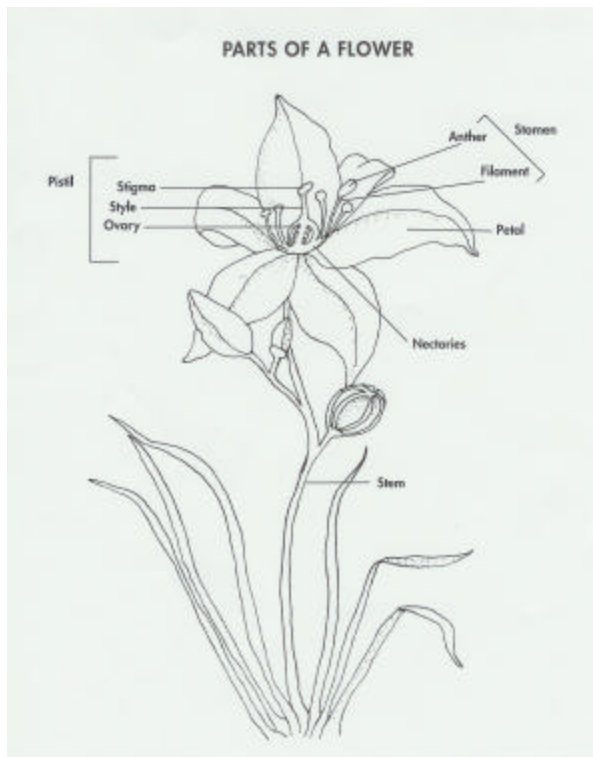
**FOOD, LAND, AND PEOPLE  
FCAT ASSESSMENT QUESTIONS  
PRE/POST TEST  
Answer Key**

**BUZZY, BUZZY, BEE**

Please select the **best** answer.

**1. SC.F.1.2.2**

The diagram below identifies the parts of a flower that are necessary for pollination.



The following steps describe the process of cross-pollination, however they are not in the correct order.

1. The bee lands on a flower collecting nectar, pollen, and water.
2. Pollen from the bee's legs is deposited onto the pistil of the flower.
3. The anther makes pollen for the flower.
4. The bee flies to another flower and brushes against the pistil of the flower.

Choose the sequence that lists the steps in the correct order.

- A. **3,1,4,2**
- B. 1,3,2,4
- C. 2,1,4,3
- D. 3,1,2,4

**FOOD, LAND, AND PEOPLE**  
**FCAT ASSESSMENT QUESTIONS**  
**PRE/POST TEST**  
**Answer Key**

2. SC.G.1.2.1

The purpose of a flower is to produce seeds. Insects or wind begin the process by pollinating the flower. Fertilization takes place when the pollen joins the egg to make a seed. In what part of the flower does fertilization occur?

- A. Anther
- B. Ovary**
- C. Petal
- D. Stigma

3. SC.F.1.2.3 (AA)

A honeybee colony is like a huge family with 50,00 to 60,00 members. There are three kinds of honeybees: the queen, the worker, and the drone. They look alike in many ways but have special adaptations to do their jobs. Which adaptation would the queen have that the worker bee would not?

- A. A special honey stomach
- B. A special part to secrete wax
- C. Egg-laying ability**
- D. Pollen sacs on the legs

4. SC.G.1.2.1, SC.G.1.2.5

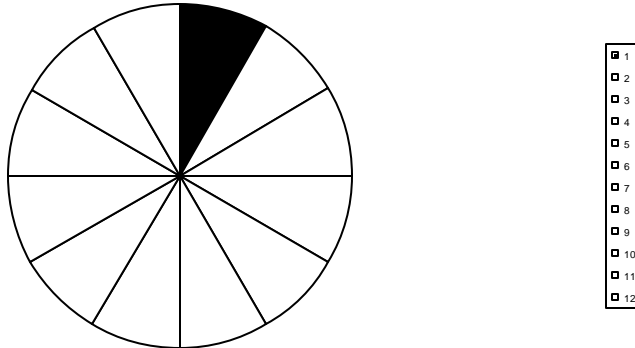
Some people are afraid of bees. However, bees are beneficial to people in many ways. What is one way that bees are helpful to people?

- A. Bees pollinate the orange blossoms so oranges form.**
- B. Bees help plants carry out the process of photosynthesis.
- C. Bees have illuminating bodies that produce light at night.
- D. Bees prey on insects harmful to humans.

**FOOD, LAND, AND PEOPLE**  
**FCAT ASSESSMENT QUESTIONS**  
**PRE/POST TEST**  
**Answer Key**

5. MA.E.1.2.1

1 Teaspoon of Honey

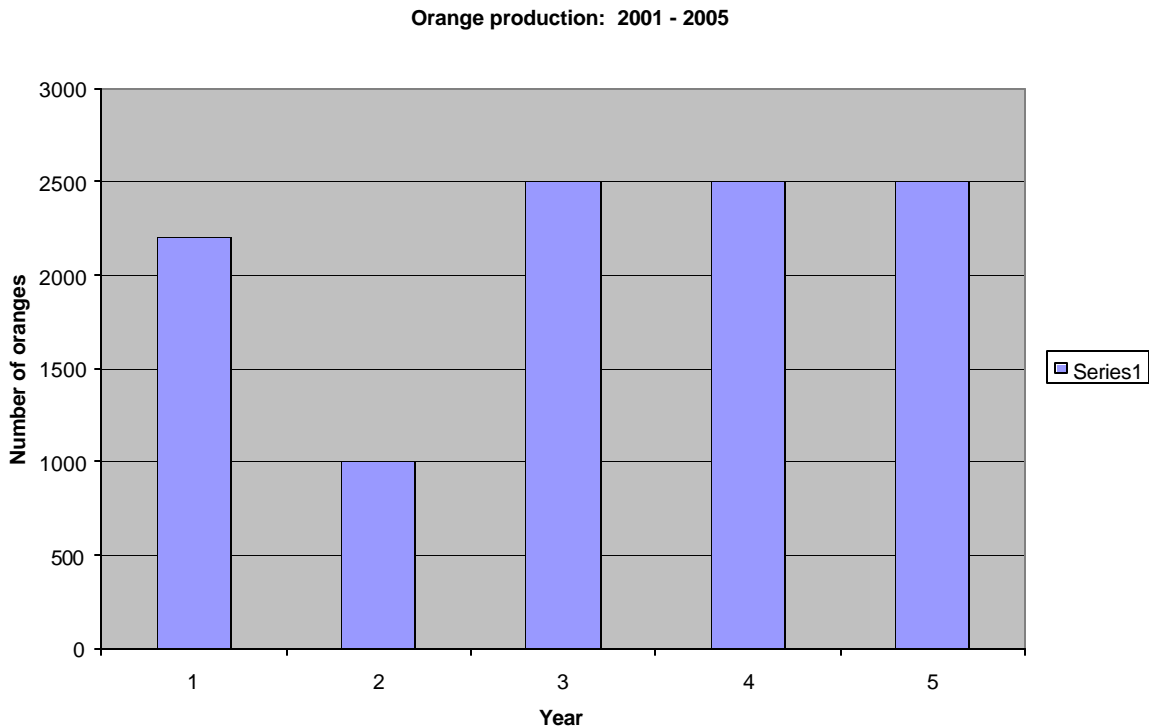


The circle graph represents one whole teaspoon of honey. The shaded area represents how much honey a worker bee can make in its lifetime. If a colony contains 240 worker bees, how much honey can the colony make?

- A. 12 teaspoons
- B. **20 teaspoons**
- C. 24 teaspoons
- D. 2880 teaspoons

**FOOD, LAND, AND PEOPLE  
FCAT ASSESSMENT QUESTIONS  
PRE/POST TEST  
Answer Key**

Performance Task: SC.H.1.2.2 (AA), SC.H.3.2.2 (AA)



Mr. Sanchez has an orange grove in central Florida. He keeps accurate records of the oranges produced each year. Honeybees are important to the production of oranges because they pollinate the orange blossoms. Mr. Sanchez keeps hives for honeybees beside the grove. Examine the graph Mr. Sanchez made of the oranges produced in his grove during the last five years.

Write a paragraph explaining what might have happened to the bee population in 2002.

**[Correct response might list these factors:**

- **The bee population is drastically reduced so less oranges could be produced.**
- **Some bees may have died off from a virus or other disease.**
- **Some bees may have died from harsh weather.**
- **The hive may have been overcrowded and the bees swarmed and left the area entirely.]**